

See Clearer, Assess Better and Act Faster

A lightweight quadcopter for superior ISR¹

Osprey is specifically designed to support the latest NextVision Raptor EO-IR sensor which delivers a zoom function up to 80X. It provides compact and powerful visual awareness to the Skyfish UAS operator and is the sensor of choice when best performance in the visible and infrared range is required.

Flies longer

Complex missions can be flown with fewer battery changes in the field. Osprey can be configured to fly for up to 30 minutes (45 minutes expected in early 2026), depending on the battery selected, with 3 miles for radio range.

Easy portability

At 15 lb all up weight, Osprey is compact and is ready for field deployment. Osprey transports in a small case (sourced in the USA) for easy portability.

Ground control station

Skyfish has customized QGroundControl for flight navigation and integrated it with our proprietary ground control station. The Talon remote controller runs on the same NVIDIA processor as the Skyfish Osprey drone, ensuring seamless interoperability, fewer parts, and simplified maintenance. Our custom-designed PCB removes tablet limitations, maximizes processing power, and provides the flexibility to meet specific customer requirements.

Object tracking

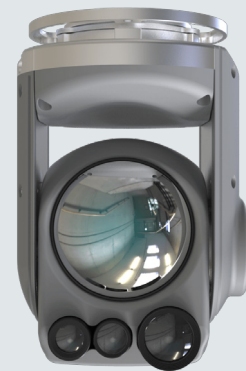
The NextVision Raptor provides EO/IR object tracking, geolocation, video compression, IP streaming, video recording, and ample resolution to read a license plate.

Made in the USA and NDAA compliant

Based in Missoula, MT, Skyfish designs drones, battery systems, airborne guidance, and ground control stations, which provide real-time video and telemetry feeds from the aircraft – all in house, for the past 12 years. Skyfish is fully made in the USA and is NDAA compliant.

Best in Class ISR¹ NextVision Raptor

- ▶ X80 EO zoom (X40 + X2 digital)
- ▶ Significant IR range increase
- ▶ Rainproof
- ▶ Day, low-light, and night-time capabilities ranging from Near-Infrared (NIR) to Long Wave Infrared (LWIR) imaging.



Osprey Remote Controller Supports QGroundControl

- ▶ Daylight and night readable
- ▶ Comfortable to hold, easy to use
- ▶ 4 joysticks (2 navigation, 2 sensor control)
- ▶ Support for QGroundControl: Intuitive and powerful ground control station for the MAVLink protocol

Technical Specifications



Aircraft

Dimensions (unfolded)	30" L x 30" W x 12" H
Dimensions (folded)	15" L x 15" W x 12" H
Ground clearance	8.5" for payload
Empty weight	~9 lb (no battery, no gimbal/camera)
All up weight	~15 lb
Max. payload	~3.5 lb
Max. air speed	50 mph
Max. ascent/descent speed	Customizable up to 16 ft/s
Max. pitch angle	Customizable to 45°
GPS	RTK capable
Operation temperature	0°F to 115°F (aircraft without payload) 32°F to 104°F (aircraft with payload)
Max service ceiling	10,000 ft MSL
Flight modes	4 modes (Autonomous, Loiter, AltHold, RTL)
Flight time	Up to 30 minutes depending on battery selected (45 minutes expected in 2026)
Propellers (material)	Carbon composite
Propellers (dimensions)	20", 2 CW, 2 CCW
Failsafe behaviors	Comprehensive failsafes for low battery, RC loss, GCS failures, Remote ID, and more

Power

Number of motors	4
Max. instant peak power	6 KW (1.5 KW /motor)
Normal power consumption	1 KW (250 W /motor)
Equivalent KV	330 RPM/V

Battery

Number of battery packs	1
Capacity	24,000 mAh (33,000 mAh in development)
Peak voltage	25 V
Nominal voltage	22.2 V
Life cycles	500+
Connectors	Governed slow start loading

Telephoto Camera

Sensor (make, model)	NextVision, Raptor
Zoom	X80 (X40 + X2 digital)
FOV	60° WFOV – 1.5° NFOV – 0.75° DFOV
Thermal resolution	1280x720
Pitch forward	-45° to +80°
Yaw/roll forward	-180° to +180° Optional 360° continuous
Weight	640 grams
Dimensions	D-90mm x H-120mm

Remote Controller²

FORM FACTOR	
Dimensions	335mm x 180mm x 100mm (13.2" x 7.1" x 4")
Material / Finish	HP Nylon 12 / Black Finish
Weight	1.1 kg (2.5 lb)
Thickness	81mm (3.2") (without joysticks)
HUMAN INTERFACES	
Joysticks	4 2-Axis joysticks (adds 20mm thickness)
Switches	6 switches with customizable functions (camera shutter trigger, setting flight modes, RTL, etc.)
SCREEN	
Resolution	1920 x 1200 px
Dimensions	8" screen (131.6 x 202.0 mm)
Luminance	500 cd/m2
BATTERY	
Weight	0.23 kg (0.5 lb)
Dimensions	85mm x 77mm x 23mm (3.35" x 3.03" x 0.91")
Battery Life	Onboard (USB-PD), optional external charger
Charge	3 hrs

¹ Intelligence, Surveillance, and Reconnaissance
² Additional technical specifications for the Skyfish Talon controller can be found on our [website](#)